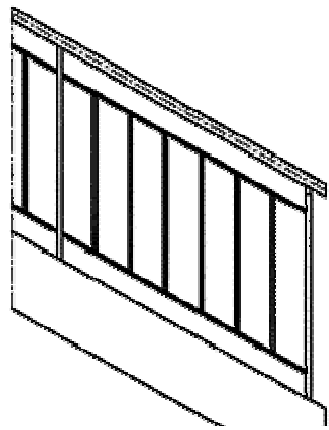
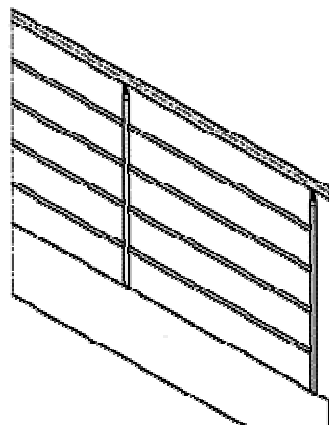


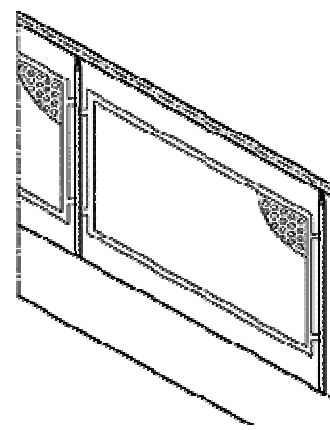
Standard 10mm \varnothing spindles with lower rail



Standard 10mm \varnothing spindles with upper and lower rail



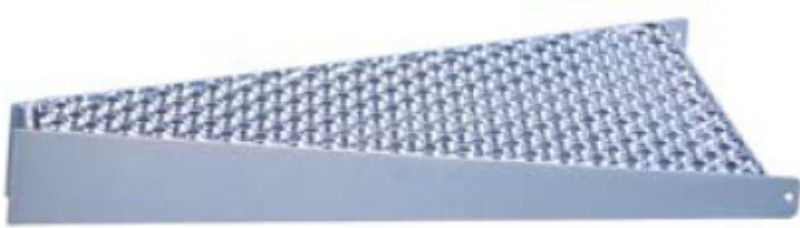
Horizontal bars – 14mm \varnothing (2-8 no.)



Mesh Infill panels



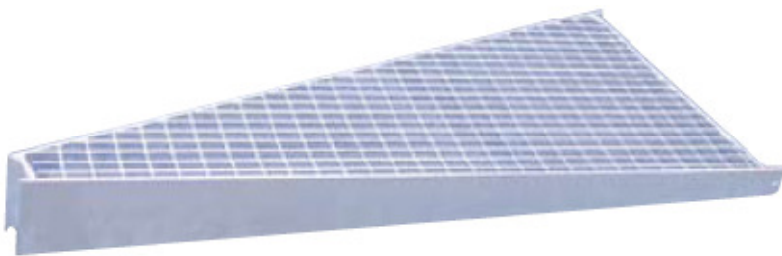
External Fire Escapes are generally galvanised but can be galvanised and then powder coated – any RAL colour



Non Slip Perforated Steel



Tear Plate / Chequer plate



Mesh grating



Steel plate to take infill