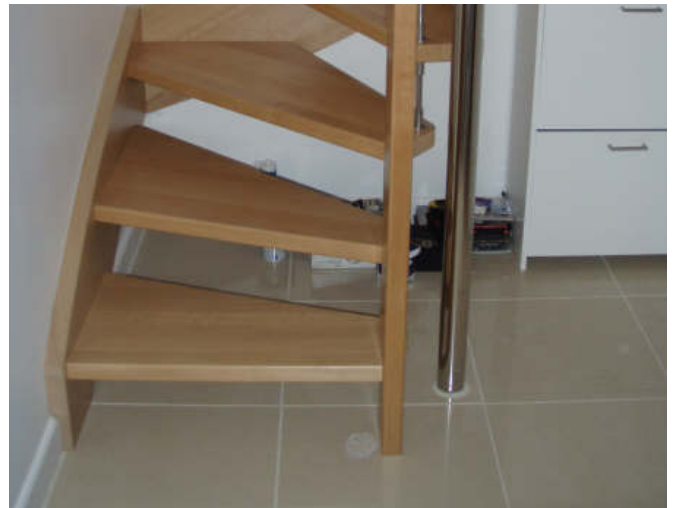


CASE STUDY – WF Staircase – St Sampsons, Guernsey

Our client was involved with a refurbishment of an older property, bringing it up-to-date with some more modern fixtures and fittings. We were approached to replace an aging timber staircase with a more open model to allow the passage of light. We selected the WF structure which is supported by a wall stringer and included a stylish curved handrail to the internal turn. The spindles matched the stainless steel post currently in position and the beechwood treads / stringer and handrail blended in with the doors installed throughout.



TECHNICAL SPECIFICATION

Floor height	-	2600mm
Rise	-	200mm
Going	-	222mm
Tread	-	42mm Beech
String	-	42mm Beech
Spindles	-	Stainless Steel spindles
Newel posts	-	160 x 42mm Beech
Handrail	-	160 x 42mm Beech
Additions	-	Aprons supplied