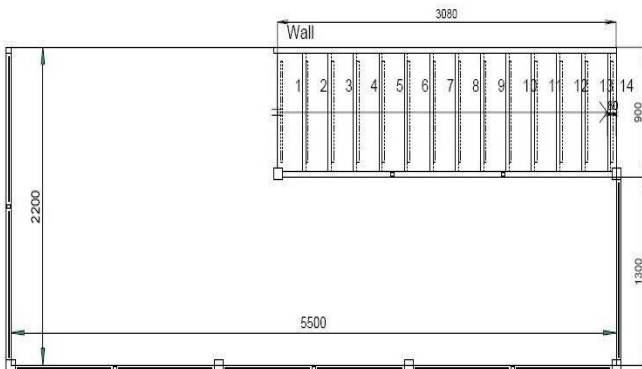


CASE STUDY - Traditional Style Staircase – Alton, Hants

This customer was looking to replace their staircase after suffering flood damage to the lower part of the house. Replacing everything gave them the opportunity to create a more impressive look to the room. The large void above the living room meant that a large galleried area existed; glass infill panels in the balustrade allowed a light and airy feeling to be incorporated into a safety feature around the opening. The stair itself, constructed of Varnished Oak, was a fitting centre piece to the new design of the property.



TECHNICAL SPECIFICATION

FLOOR TO FLOOR HEIGHT	-	2600mm
RISERS	-	14 @ 185.7mm
GOING	-	230.8mm
CLEAR TREAD WIDTH	-	900mm
TREADS	-	42mm Solid Oak
STRINGERS	-	42mm Solid Oak
NEWEL POSTS	-	80 x 80mm Oak (no. 1 in range)
HANDRAIL	-	no. 1 in range – Solid Oak
BALUSTRADE INFILL	-	8mm toughened glass panels
LANDING BALUSTRADE	-	9000mm

