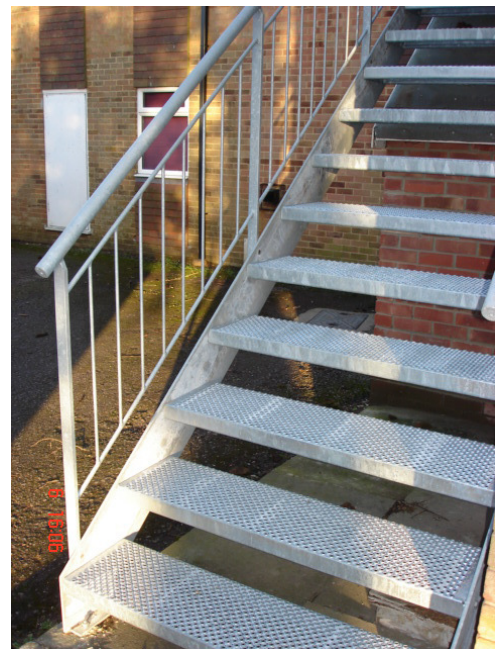
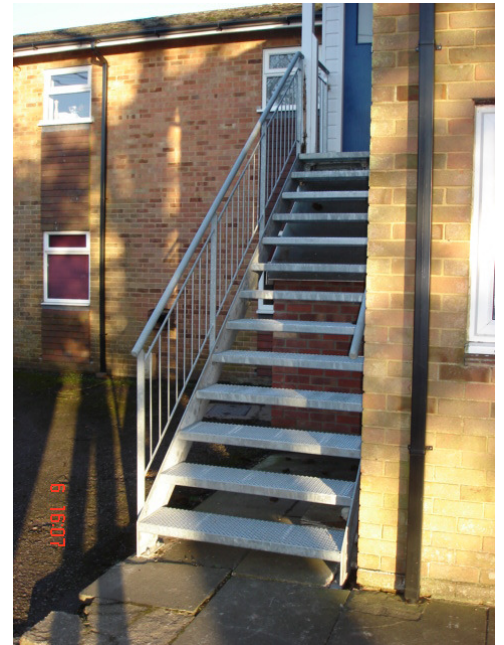
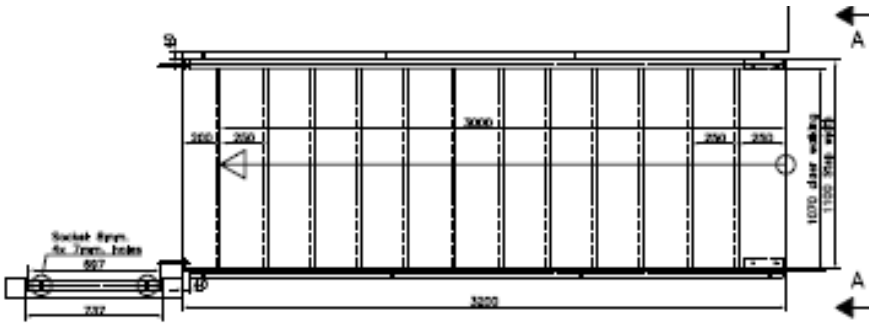


CASE STUDY - Bespoke External Straight Flight - Private School, Romsey

A local private school required a new staircase for one of its accommodation flats; requiring it to be sturdy, weatherproof, and capable of taking heavy loads. For this we recommended a product from our bespoke range of external stairs. The clients settled upon a simple straight flight construction, to be fully galvanised to survive any weather conditions, and with non-slip perforated steel treads to maximise the safety of those using it. In accordance with this goal, we also recommended the vertical spindles for the staircase balustrade; as can be seen, this suggestion was acted upon to create a finished product that the client was delighted with.



TECHNICAL SPECIFICATION

FLOOR TO FLOOR HEIGHT	-	2557mm
RISERS	-	13 @ 196.7mm
CLEAR TREAD WIDTH	-	1070mm
TREADS	-	Non-slip Perforated Steel
STRINGER	-	230x10mm Steel
HANDRAIL	-	Ø42mm Steel Tube
BALUSTRADE INFILL	-	Ø 10mm Steel
SURFACE STEEL	-	Galvanised
ADDITIONAL	-	Wall-mounted Handrail