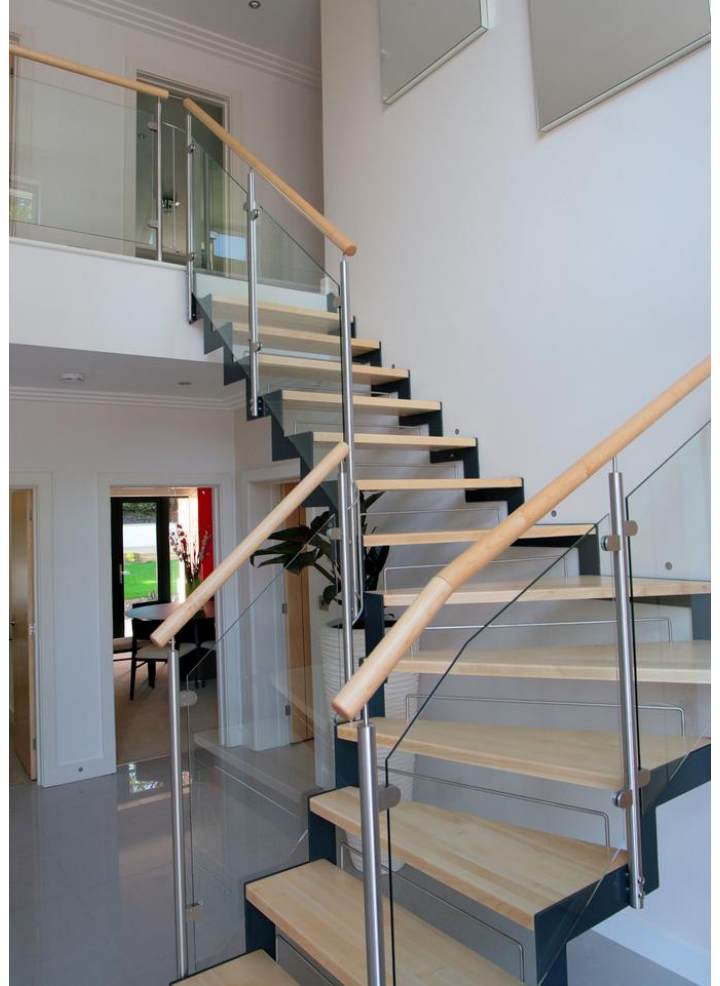
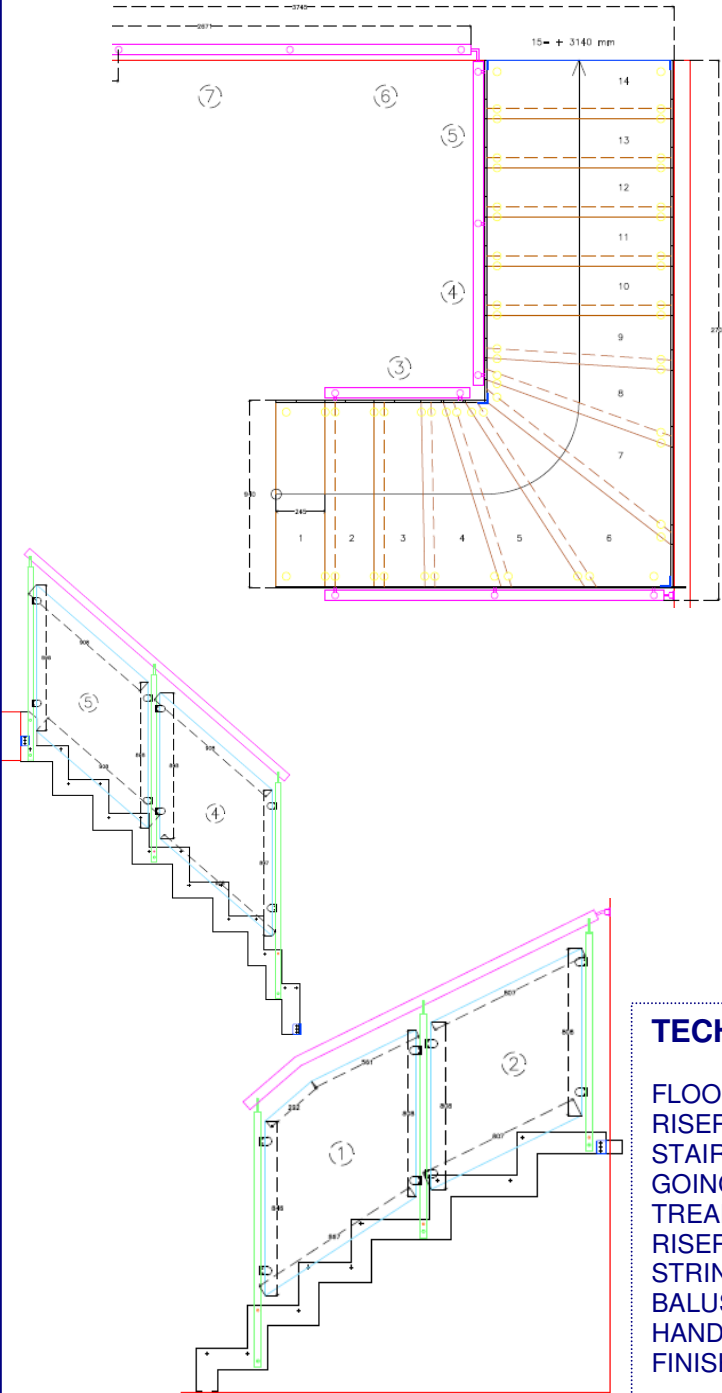


CASE STUDY – Custom Made Modular Staircase – Model 500 - Poole

Our customer was a small house builder specialising in luxury properties in this prestigious location. We were approached to provide a modern functional staircase that allowed the passage of light. After initial discussions we decided upon on model 500 system with zig-zag 'saw tooth' stringers. The treads and handrail were manufactured in maple to match the surrounding doors and the balustrade was infilled with toughened glass panels. The gap between the risers was reduced to less than 100mm by stainless riser bars. The customer selected to have the stringer powder coated black but they can painted any colour.



TECHNICAL SPECIFICATION

FLOOR TO FLOOR HEIGHT-	3140mm
RISERS	- 15 @ 209.3mm
STAIR WIDTH	- 900mm
GOING	- 245mm
TREADS	- 40mm Maple
RISERS	- Open with stainless riser bars
STRINGERS	- zig – zag 'saw tooth'
BALUSTRADE INFILL	- 10mm toughened glass panels
HANDRAIL	- 50mm diameter maple
FINISH	- Powder coated RAL 7016