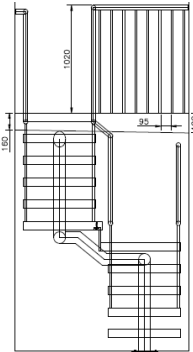
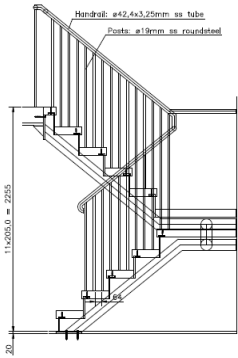


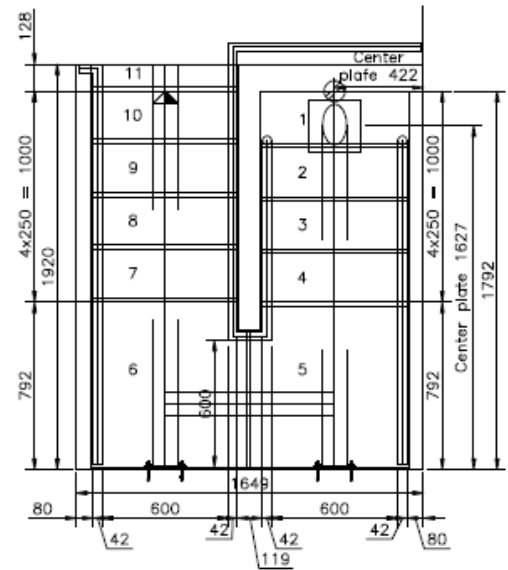
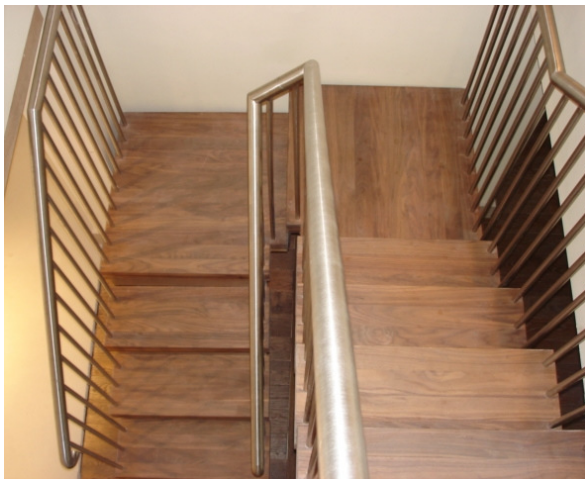
CASE STUDY - Bespoke Staircase – Penn, High Wycombe

We were instructed to provide two bespoke staircases for a private customer undertaking a substantial refurbishment of a domestic property in Penn. The second stair was a 1/2 turned model to fit into a tight existing stairwell. Each tread was only 645mm wide, but as the length of the opening was so large, we introduced two mid platforms and set the tread going at 250mm to ensure the staircase was comfortable to ascend. The design had to match the spiral we supplied, so we had the same 80mm thick Walnut treads and stainless steel spindles and handrail. Instead of two conventional stringers, our customer wanted a more modern feel so we designed a tubular spine to run up the middle of the staircase. This spine and the tread supports were powder coated black. The risers were infilled completely with a stainless steel plate.



TECHNICAL SPECIFICATION

FLOOR TO FLOOR HEIGHT	-	2255mm
RISERS	-	11 @205mm
WIDTH	-	645mm
LANDING	-	2 no. 792 x 645mm mid platforms
GOING	-	250mm
TREADS	-	80mm Walnut
RISER INFILL	-	10mm Stainless Steel Plate
SUPPORT	-	Ø 114.3 x 3.6mm Steel Spine
VERTICAL SPINDLES	-	19mm Ø Stainless Steel
HANDRAIL	-	33.7mm Ø Stainless Steel
FINISH	-	Powder Coated Black



01794 522 444

www.completestairsystems.co.uk
info@completestairsystems.co.uk